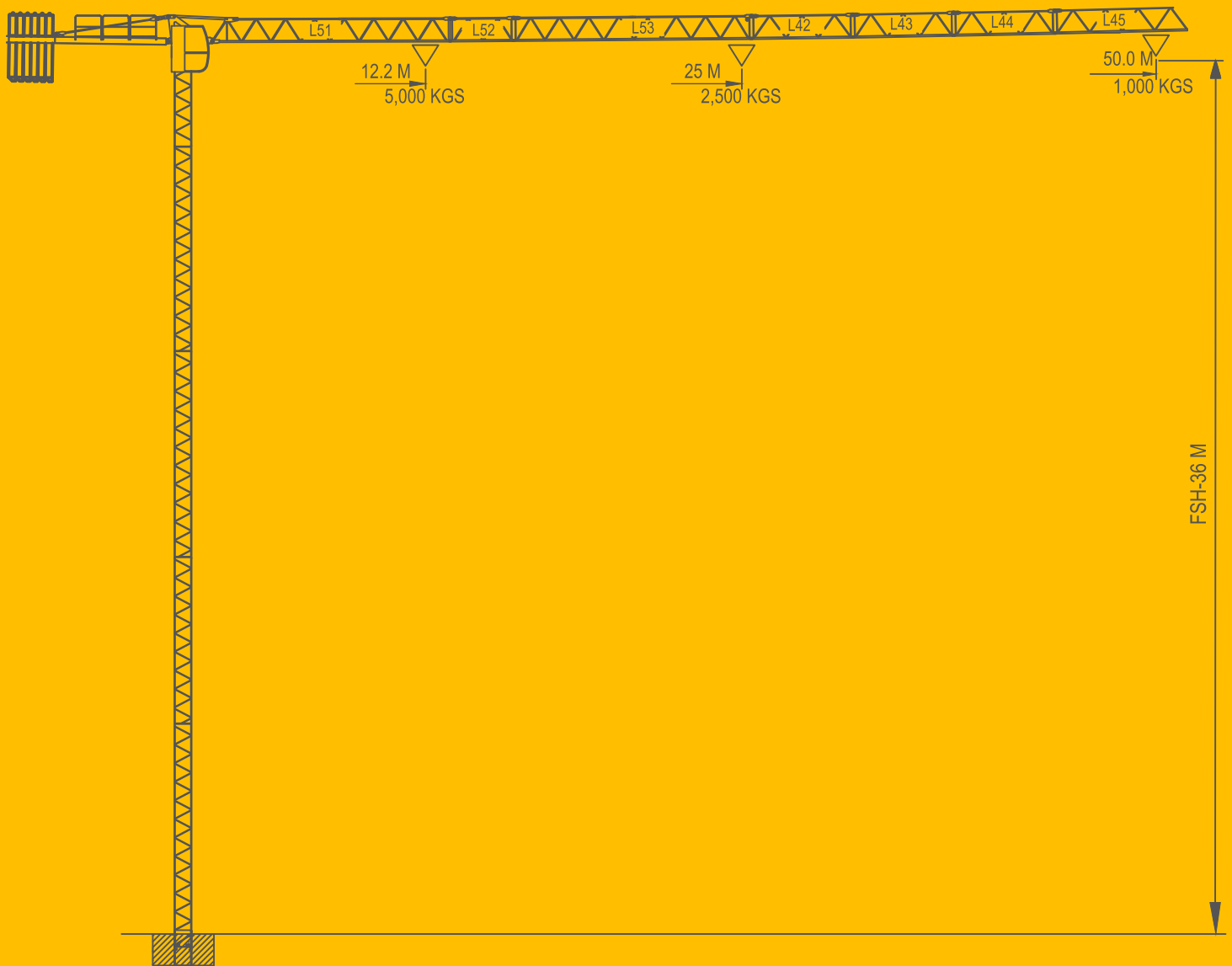


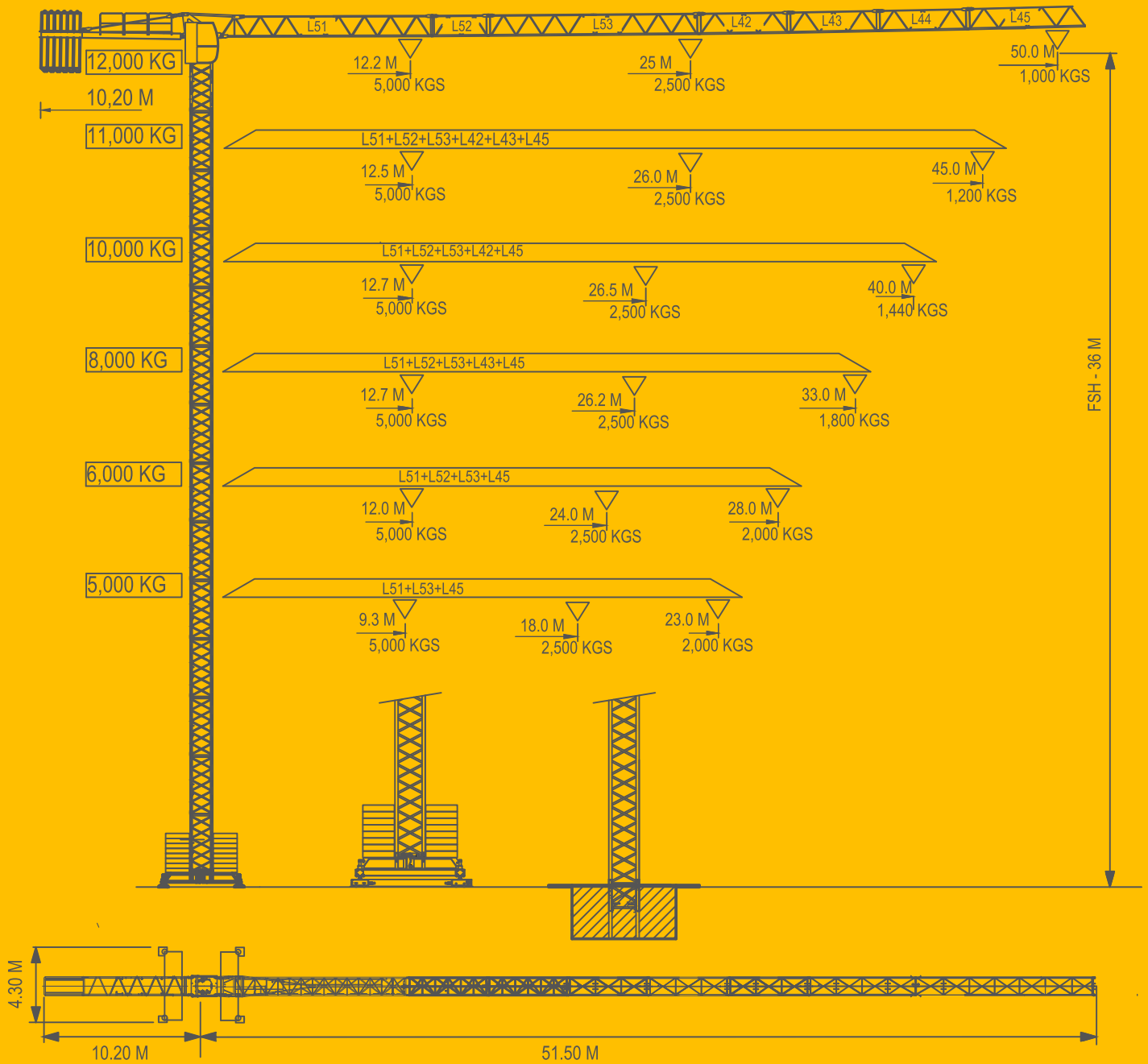


SGT 5010 TL



FIXED TOWER CRANE SGT 5010 TL

SGT 5010 TL

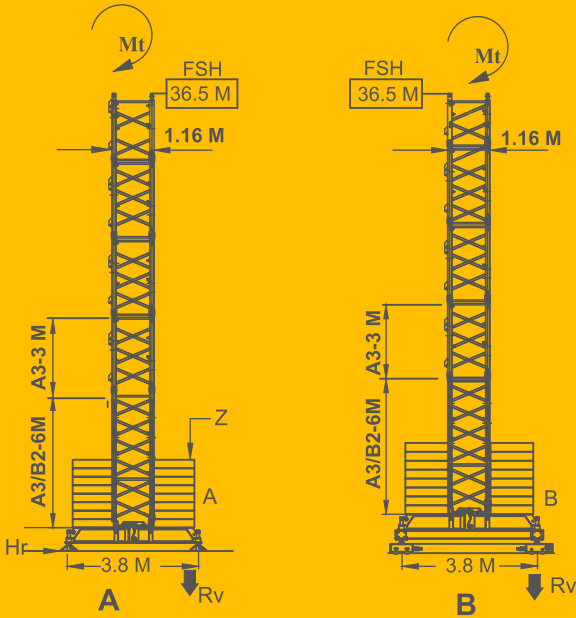


Icon	Jib Length (M)	Jib Configuration	Load Capacity (KG)		M	12	15	23	28	33	40	45	50
			5000	2500									
12000 KG 5X2000+2X1000 KG	50 M	L51+L52+L53+L42 L43+L44+L45		25.0 M	5000	2500	2500	2500	2000	1680	1280	1120	1000
			12.2 M			5000	4000	2560	2000	1680	1280	1120	1000
11000 KG 5X2000+1X1000 KG	45 M	L51+L52+L53+L42 L43+L45		26.0 M	5000	2500	2500	2500	2080	1760	1360	1200	
			12.5 M			5000	4000	2640	2080	1760	1360	1200	
10000 KG 5X2000 KG	40 M	L51+L52+L53+L42 +L45		26.5 M	5000	2500	2500	2500	2160	1760	1440		
			12.7 M			5000	4050	2720	2160	1760	1440		
8000 KG 3X2000+2X1000 KG	33 M	L51+L52+L53 +L43+L45		26.2 M	5000	2500	2500	2500	2160	1800			
			12.7 M			5000	4100	2720	2160	1800			
6000 KG 3X2000KG	28 M	L51+L52+L53+L45		24.0 M	5000	2500	2500	2500	2000				
			12.0 M			5000	4000	2500	2000				
5000 KG 2X2000+1X1000KG	23 M	L51+L53+L45		18.0 M	5000	2500	2500	2000					
			9.3 M			3925	3050	2000					

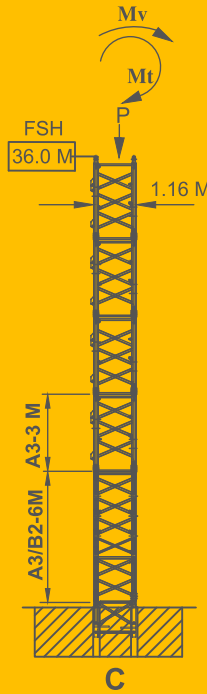
SGT 5010 TL

EXTERNAL CLIMBING ARRANGEMENT

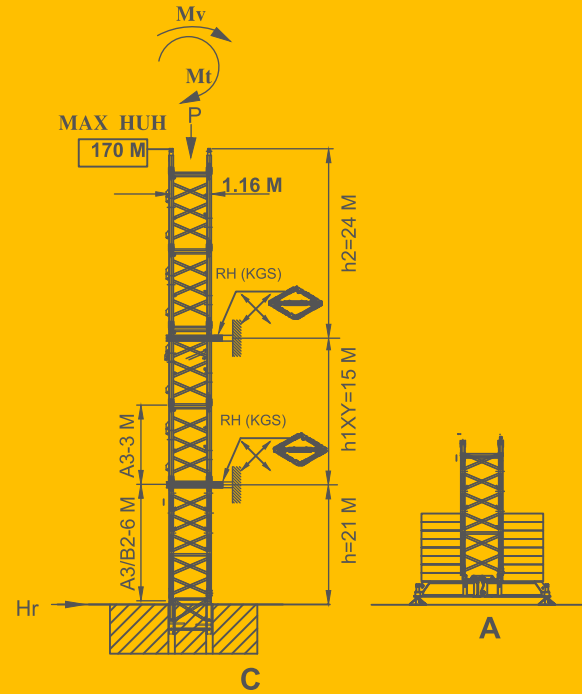
FREE STANDING HEIGHT-FSH



FREE STANDING HEIGHT-FSH



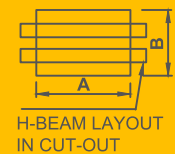
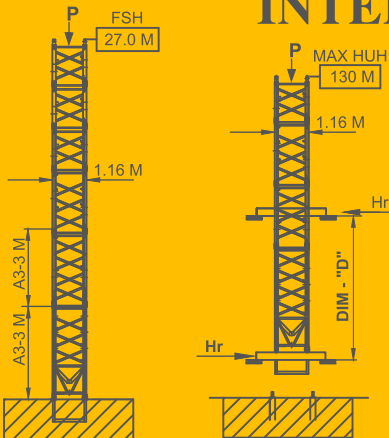
MAX HUH WITH ANCHOR



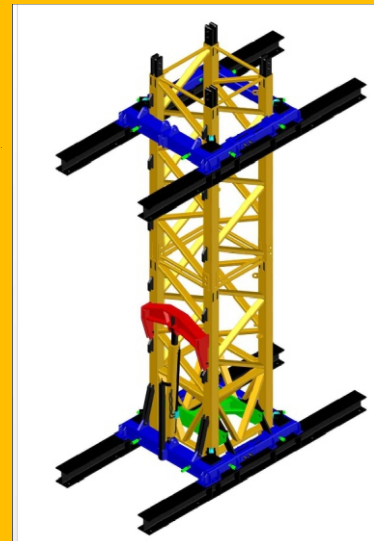
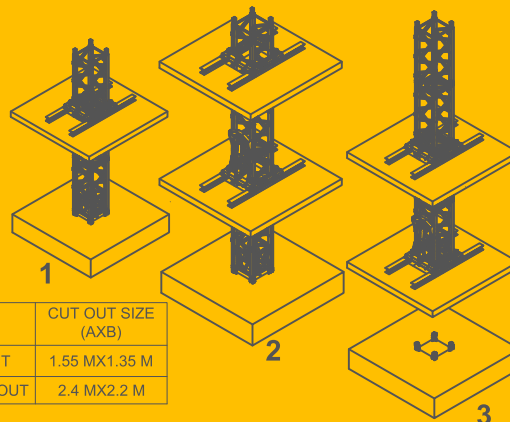
S.NO.	REACTION	SYMBOL	UNIT	DATA FOR A & B (F.S.H.)		DATA FOR C (F.S.H.)	
				IN SERVICE	OUT OF SERVICE	IN SERVICE	OUT OF SERVICE
1	VERT. REACTION	P	KGS	—	—	33,639	35,871
2	HOR. REACTION	Hr	KGS	4,550	7,441	4,550	7,441
3	SLEW MOMENT	Mt	KG-M	6,728	—	6,728	—
4	MOMENT	Mv	KG-M	—	—	1,08,359	1,15,698
5	MAX. VERT. REACTION-EACH PAD	Rv	KGS	44,852	46,835	—	—
6	BASE COUNTER WEIGHT	Z	KGS	61,162	61,162	—	—
7	TIE FORCE (HUH) FOR (A&C)	Rh	KGS	—	—	10,601	12,742

REMARKS : DATA FOR MAXIMUM JIB LENGTH & MAXIMUM F.S.H

INTERNAL CLIMBING ARRANGEMENT













S.NO.	DISCRIPTION	CUT OUT SIZE (AXB)
1	FLOOR CUT-OUT	1.55 MX1.35 M
2	LIFTSHAFT CUT-OUT	2.4 MX2.2 M

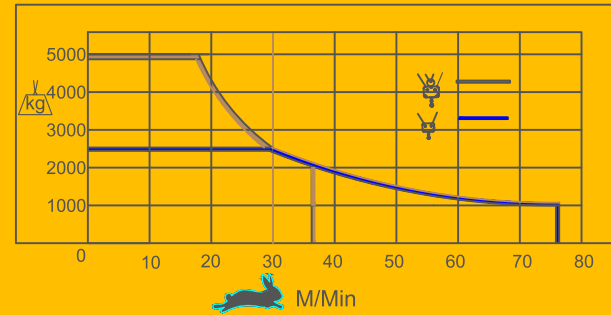







S.NO.	REACTION	SYMBOL	IN SERVICE	UNIT	OUT OF SERVICE	DIM "D"-M
1	VERT. REACTION	P	33,435	KGS	36,403	5.5 M. (MIN.)
2	HOR. REACTION	Hr	17,431	KGS	20,897	8.5 M. (STD)
3	VERT. REACTION	P	33,435	KGS	36,403	
4	HOR. REACTION	Hr	11,280	KGS	20,897	

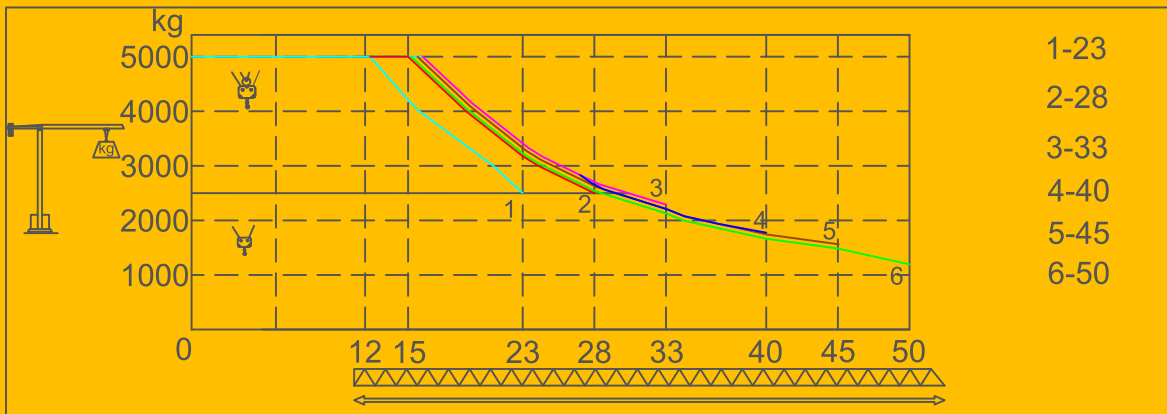
REMARKS : PLEASE CONSULT ALPHA FOR F.S.H.>27 M & OTHER SPACING DIM. "D".

POWER-SUPPLY	HOIST WINCH	THREE -PHASE SUPPLY
30 KVA	ASW 15/1	380V-50Hz

HOIST WINCH	SYMBOL	FALL				POWER-SUPPLY
STD-ASW 15/1			0-76 M/Min	15.0 KW	STD HUH-86 M	30 KVA
			0-38 M/Min			
OPTION- ASW15/2			SAME AS ABOVE	15.0 KW	MAX HUH-130 M	30 KVA
OPTION- ASW15/3			SAME AS ABOVE	18.5 KW	MAX HUH-170 M	37 KVA



MECHANISM	SYMBOL		
TROLLEY		0-60 M / MIN	3.0 KW
SLEWING		0-1 RPM	3.7 KW
TRAVELLING		0-15 M / MIN	2X3 KW



- 1-23
- 2-28
- 3-33
- 4-40
- 5-45
- 6-50

OPTIONAL FITMENT: SAFE LOAD INDICATOR (SLI) , DISPLAY UNIT IN CABIN , ANTI COLLISION DEVICE , ANEMOMETR, WIRE LESS REMOTE CONTOL OPERATION.

REMARKS: ALPHA RESERVES THE RIGHT TO ALTER THE SPECIFICATIONS WITHOUT PRIOR INTIMATION. WEIGHT, DIMENSIONS & CAPACTIES MENTIONED HERE IN ARE VARIABLE WITH IN +/-5%. ACCESSORIES , IF ANY SHOWN HERE IN , ARE NOT PART OF STANDARD EQUIPMENT.



CANGRAFT

Auth. Dealer

CANGRAFT EQUIPMENT PRIVATE LIMITED

Office No.16, Wing C, Roshan One, Chakan M.I.D.C
Phase-II Near Podar International School
Varale, Pune-410501
Mobile : +91-8800239853, +91-8800495428
Email : info@cangraftequipment.com

01/11/22

HEAD OFFICE

Plot No-122, Industrial Area,
Phase-IV, Udyog Vihar
Gurugram, Haryana Pin-122015
Phone : 011-26302647, 26302517, 26302434
E-mail : alpha@alphaservices.co.in
Website : www.alphaservices.co.in

PLANT1

F-84-85, 85a & 59A , RIICO Industrial Area
Bhiwadi, Distt. Alwar, Rajsthan-301019
Phone : 01493-221873
E-mail : alpha1@alphaservices.co.in
Website : www.alphaservices.co.in